

FREE

2022 VIRTUAL COMMUNITY ENGAGEMENT SYMPOSIUM:

*Building Trust and Working
Together for Authentic
Community-Campus
Partnerships*

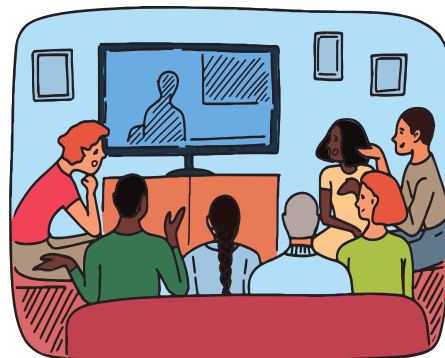
featuring:



Dr. Shawnita Sealy-Jefferson

Associate Professor at
Ohio State University

Join Us!



Learning Together! Watch Party

You're invited to our **WATCH PARTY** of
the Community Engagement Symposium.
We will take care of the technological
hassles, so you don't have to!

Date(s): _____

Time: _____

Location: _____

Contact _____

for more info at _____

When researchers and community members engage in discussion, it
can help identify priority community health concerns. It also allows
for research findings to be shared and then adopted.

This event will focus on how community groups and researchers can
work together to conduct studies that matter to the community.

Learning Together! Watch Parties

Make connections and bring important health information to your community. Help bridge the digital divide and host a live watch party of the Symposium in your community!

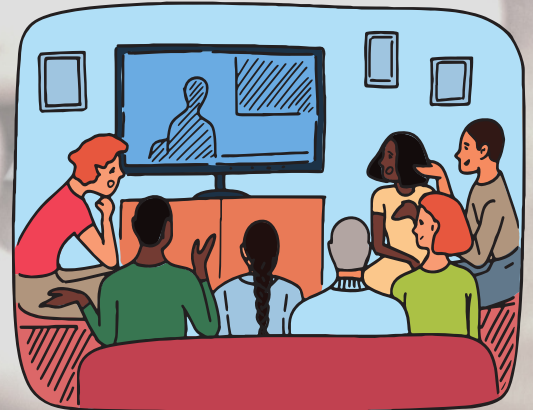
Before your *Learning Together Watch Party* ...

- Register your watch party team [here](#).
- Work with your community to find a good location to host the watch party. Some possible places include: a community center, school, or someone's home.
- Review the Symposium schedule [here](#). Will your watch party cover 1 or 2 days?
- Download, complete, and share a [flyer](#) for your watch party.
- Check your internet connection. Need a Zoom practice run? Contact us at IIMS-CE@uthscsa.edu.
- Check your tv/monitor, sound, and camera. Will your team be able to see and listen? We would love to see your team during the event!



During your *Learning Together Watch Party*...

- Turn on [Zoom closed captioning](#) for non-English speakers.
- Designate people to help:
 - submit questions in the Zoom chat;
 - take and share photos;
 - collect mini evaluations; and/or
 - take notes.



After your *Learning Together Watch Party*...

- Discuss what your team learned.
- Return your evaluations and a copy of a sign-in sheet.
- Follow up with us to tell us about your watch party experience.

Limited funds available for watch parties hosted by CHWs in South Texas!

[Apply here](#) by Nov. 21.